

GNR

SmartElimu ERP

2024

EDUCATION MANAGEMENT SOLUTIONS

@SmartElimu2024

DIGITAL TRANSFORMATION



VISION

To be a successful global information and communication technology hub known and trusted for collaboration and agile service delivery excellence with innovation to add value to our clients in digital transformation lifecycle - driven ICT products and services.



MISSION

To make technology an integral part of our client's business ecosystem by automation and supporting operations to provide resilience, security and availability of services on the GO!



GNR MATRIX CLOUDS HUB (T) LTD

www.gnrmatrix.africa

Info@gnrmatrix.africa

LET'S GROW WITH US



SmartElimu ERP

INTRODUCTION

GNR MATRIX CLOUD HUB (T) LTD can implement an integrated ICT School Management System Christened SmartElimu that has many functionalities at any institution/Government. SmartElimu is an Integrated School Management System that is an excellent approach to keep things simple and orderly. Keeping track of everything that happens in a school/educational institution is one task that may take up a lot of space and time. In such a situation, SmartElimu will help a school/educational institution to become more structured and effective in no time.

The Concept of GNR SmartElimu ERP

SmartElimu ERP is a technology that allows the administration of educational institutions to measure, access, link, and coordinate learning processes.

This classification is since SmartElimu is intended to help educational institutions with their day-to-day operations by automating administrative tasks.

SmartElimu includes everything from application and class registration to comprehensive performance monitoring and finances.

Administration management often encompasses both the School and Student/Guardian. SmartElimu include a feature set to help with day-to-day operations, such as facility management, procurement and inventory. We can customize SmartElimu to be used for several purposes including information management and having Communication channels with the broadcast and private messaging feature including parents.

We shall customize SmartElimu access database with all the information that needs to be available for instructors and students, who register using access codes supplied by the school.

Once registered, each administrative department of the institution will have its own interface for managing its activities inc.

Administrators will have access to all information and will be able to make announcements, instructors will have accessibility to all students' attendance and curriculum, and students will have access to the class and test learning paths.

Internal messaging is also incorporated in SmartElimu to facilitate communication among school administrators, instructors, students, and parents.

Bulk SMS, email, or tailored alerts are used to notify parents of school events and activities before, during, or after they occur as a way of thanking them for their participation.

Why you should use SmartElimu ERP?



Schools should use SmartElimu ERP because it will make their job much easier. In a variety of educational institutions, SmartElimu is required to manage its framework, program, syllabus, and Communications, as well as to give powerful reporting and analysis to track all activities.

SmartElimu is vital to educational institutions because it will provide numerous benefits, the bulk of which originate from centralized data administration and accessibility.

Teachers can more easily save, manage, and retrieve student data. Parents now have a better idea of their child's performance in class.

Compliance and other regulatory standards are also much easier to satisfy.

Whether the institution is a small private corporation or a world-class institution, SmartElimu may be used for several purposes, including Force Schools, K-12 Institutions, Music Institutes, Dance Studios, Academies of Sport, Colleges, and Institutions of General Education.



SmartElimu promotes operational performance and engagement between students, instructors, and parents and has several other advantages which include:

Save time:



It saves instructors valuable time from administrative tasks. This is achieved by automating time-consuming daily tasks such as timetable creation, attendance management, parent-teacher conversations, and so on.

The school administration module within SmartElimu can generate a variety of reports to assist teachers and principals, saving money in the process.



Reporting making :

The primary advantage of SmartElimu for school managers and directors is the variety of reports generated inside the program that can be utilized to make quick and precise decisions.

There are several papers accessible from each module, and news from other modules can be connected using custom reporting strata.

These technologies may be used with the school administration system to provide the finest reports

It close to communication gape:

Organizations use Short Messaging Service (SMS) to communicate with parents in a timely and effective manner.

A brief text message might convey important information to parents.

Within SmartElimu has an administration module that includes mobile applications, which make communication more reliable.

The transmission is sent as a push notification, and it also allows parents to engage with one another.

EDUCATION



It handles the lifetime data of students:

The major goal of SmartElimu is to manage real-time data from a student's acceptance platform until the day the student departs the institution.

During this phase, the student attends a variety of classes and takes a variety of exams.

SmartElimu collects and maintains all the data, such as attendance, instructor notes, and a variety of other information related to the kids at the school.



SmartElimu provide safety for students:

SmartElimu works well in conjunction with attendance.

It provides SMS notifications on the student's presence in or out of the timing and location of the transportation on the map.

KEY FEATURES OF SmartElimu ERP



Information Management



- This one is about admissions and records for students. Another major function of SmartElimu is student registration and assignment to class groups, as well as enrollment in classes and courses. All the information gathered will be used to track and evaluate the student's progress until graduation.

Academic Management



- SmartElimu includes positions such as teachers, administrative assistants, and all other supporting employees in the proper management of all daily academic activities. This covers attendance, grades, future examinations, and curriculum progress.

Store management



- This section manages the school inventory. All school assets after procurement and recorded, and lending or borrowing is easily managed.
- This also manages stock transaction for on school sale materials as uniform.

Library management



- This module handles books borrowing and returns transaction.

Attendance management



- This manages pupils and teachers' attendance

Parents | Guardian module



- Parents and guardian can monitor student's reports as finance statements, academic progress, and attendance as well as behavior. Students earn points on good behavior recorded.

Financial Efficiency



- Real time financial updates for informed decision, making improved efficiency with automated financial transaction.

Operational Excellence



- Create a smarter, efficient school environment, access insight full reports for data-driven decision making
- User-friendly system setting for adaptability to unique School needs.



**GNR MATRIX
CLOUDS HUB**

company Portfolio



OUR CORE VALUES

Responsibility:

We will integrate environmental and social principles in our businesses, ensuring that what comes from the people goes back to the people many times over.

Innovation:

We will be bold and agile, courageously taking on challenges, using deep customer insight to develop innovative solutions.

Integrity:

We will be fair, honest, transparent, and ethical in our conduct; everything we do must stand the test of public scrutiny.

Excellence:

We will be passionate about achieving the highest standards of quality, always promoting meritocracy.

ABOUT US

GNR Matrix Cloud Hub (T) Ltd is an Information Technology Company based in Dar Es salaam Tanzania. We intend to grow and expand worldwide to create a network of research & development -"innovation labs" and "delivery centers"

We have a team of highly skilled, self-driven consultants with several years of experience in implementing internationally proven, fully integrated business solutions and services for multiple institutions.

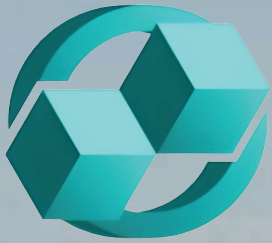
OUR INDUSTRIES

We provide ICT solutions, maintenance, and independent validation services to companies in multiple sectors including education, healthcare, spiritual, banking, automotive, capital markets, chemical and process industries, energy and utilities, manufacturing, consumer goods, insurance, media and entertainment, mining and natural resources, oil and gas, retail, complete, and travel, transportation, logistics and hospitality.

www.gnrmatrix.africa

Info@gnrmatrix.africa

LET'S GROW WITH US



**GNR MATRIX
CLOUD HUB**

GNR

SmartElimu

ERP

CONTACT US

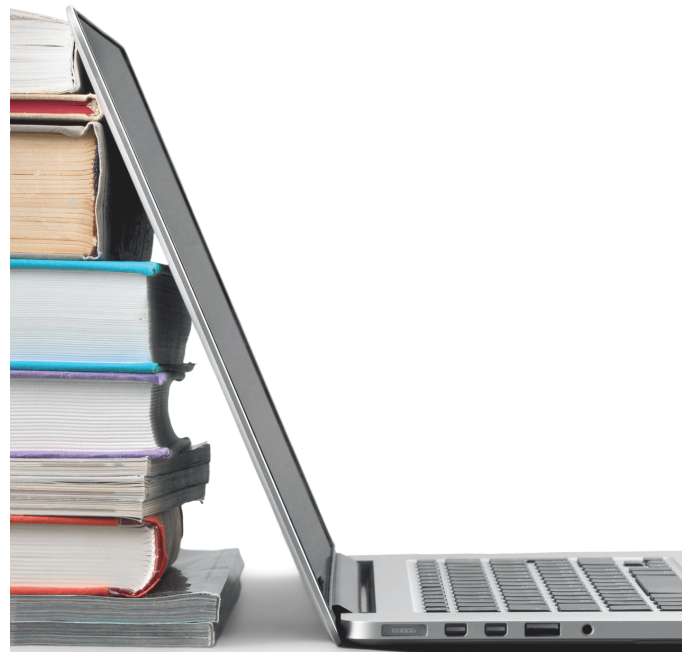
  +255 750 909 050

 +255 767 509 866

 11395 Kipako | Nyampili Street
Ukonga, Dar Es Salaam

 smartelimu@gnrmatrix.africa

 www.gnrmatrix.africa/smartelimu



GNR MATRIX CLOUDS HUB (T) LTD

www.gnrmatrix.africa

Info@gnrmatrix.africa

LET'S GROW WITH US